



# SYDNEY SHELLER

Newsletter of the Shell Club of Sydney  
NSW Branch, The Malacological Society of Australasia Limited ACN 067 894 848

28th Feb 2009  
Display Box Design

28<sup>th</sup> April 2009  
Mini Shell Show  
Cones and Cowries  
(1.30pm for 2pm – 4pm)

Next Meetings:  
(normally 4<sup>th</sup> Saturday)

Ryde Eastwood Leagues Club  
117 Ryedale Rd, West Ryde, Sydney

View old shell newsletters on line  
[www.sydneyshellclub.net](http://www.sydneyshellclub.net)

## Submit articles or ads:

Steve Dean  
PO Box 316, Mona Vale, NSW 1660  
Text by disk or email only. Photos, and  
disks by mail, or preferably by email to  
[steve@dean.as](mailto:steve@dean.as)

## Club Executive:

### Office bearers:

President: Steve Dean  
Vice Pres: Maureen Anderson  
Treasurer: Peter Pienaar  
Secretary: Kim Bishop  
Raffles: Kim Bishop  
Sheller Editor: Steve Dean  
Librarian: Steve Dean  
Annual Shell Show Mgr: Steve Dean  
Special Projects Mgr: Vacant  
MSA Delegate: Chris Barnes

## Shell Club of Sydney Mission Statement:

To appreciate, understand and  
preserve shells and their environment  
and to share this with others.



"Sweet Ceratosoma" *Ceratosoma amoenum*  
One of many interesting finds at Kurnell Club Field Trip

## Some of the topics inside:

- Kurnell Club Field Trip (Cover photo)
- News since November meeting
- Meeting Minutes November
- Jan 09 Meeting - Biggest and Smallest
-



VISITING – PERTH, WESTERN AUSTRALIA

*Don't forget to call in on..*

## PERTH SHELL DISTRIBUTORS

CRAZY CRABS *TM*

SPECIMEN SEA SHELLS FOR COLLECTORS  
CORALS LARGE AND SMALL  
WHALES TEETH  
SHARK JAWS (FULL)  
GEM STONES (WORLD WIDE)  
ANIMAL SKULLS & BONES

Buyer and Seller of Quality WA Shells

**Phone +61 8 9528 2722**

**Fax + 61 8 9528 2733**

[merv@perthshells.com](mailto:merv@perthshells.com)

[www.perthshells.com](http://www.perthshells.com)

SHOWROOM:  
12 AMBROSE STREET  
ROCKINGHAM, PERTH, WA 6017

P.O. BOX 7037  
SAFETY BAY WA 6169



**OVER 1 MILLION SHELLS IN STOCK !**

Australia's Leading Suppliers  
of Worldwide Specimen Seashells  
We buy, sell, exchange and whole-sale  
Marine and Land Shells



**Reef Guides & Fish Guides**

**SEASHELL BOOKS**

Australian Distributors

**BUY DIRECT ONLINE**



**DECOSHELLS & STARFISH**  
FOR INTERIOR DESIGN & DECORATION

5 Ealing Mews, Kingsley, WA 6026  
Ph: 08 - 9409 9807 Fax: 08 - 9409 9689  
[shells@seashells.net.au](mailto:shells@seashells.net.au)



**visit our  
website**  
[www.australianseashells.com](http://www.australianseashells.com)  
for more information



**High Quality  
Low Prices  
Free Lists**

## MIQUE'S MOLLUSCS

7078 Westmoreland Drive  
Warrenton, Virginia, USA  
20187-4451

**Tel: (540) 347-3839**

*E-Mail:*

[miques.molluscs.shells@erols.com](mailto:miques.molluscs.shells@erols.com)



**Worldwide • Best Brazilian Material  
Marine • Land • Freshwater  
Rare & Common**

E-mail list by Family on your request!

[www.femorale.com](http://www.femorale.com)

**Jose and Marcus Coltro**

Cx.P. 15011 São Paulo – SP – Brazil 01519-970

**Phone +55 11 5081 7261**

**Fax +55 11 5081 7298**

[shells@femorale.com](mailto:shells@femorale.com)

VISA - MasterCard - AMEX - Diners - Paypal

## SPECIMEN SHELLS SALES

★ BUY ★ SELL ★ TRADE ★

- Worldwide Specimen Shells
- Free Price List with Size & Grade
- Satisfaction Guaranteed or Money Refunded
- Dedicated to Service, Integrity and Reliability



1094 Calle Empinado  
Novato, California 94949  
Dan Spelling  
(415) 382-1126  
Fax (415) 883-6810

## Want your own sheller copies?

Membership + Sheller, **AU\$50 /yr.**  
Junior Member + Sheller, **AU\$15 /yr.**  
Student/Pensioner + Sheller, **AU\$25/yr**  
Additional Family Member **AU\$5 /yr.**

Includes Shellers folded & Aust. postage  
(Shellers produced when there are enough articles,  
maximum of 10 issues per year)

A4 envelopes non-folded, add **\$18 /yr**  
International postage add **\$10 /year**

To subscribe send payment & details to:

Peter Pienaar  
PO Box 901  
Campbelltown, NSW  
Australia 2560

Note: The Sydney Shell Club is a branch of  
the Malacological Society of Australasia  
(MSA) It is preferred that you are also a  
member of the MSA. MSA membership can  
be organised through Des Beechey  
[desbee@optushome.com.au](mailto:desbee@optushome.com.au)  
26 Malga Ave, Roseville Chase NSW 2069



## This Spot Available

This small size (5.4x6.2) A\$40/year

Mid size (7.9x6.2) A\$60/year

Large Size (11.7x6.2) A\$80/year



## News since November:

### Steve Dean

After the November meeting while waiting for the club Christmas dinner, we discussed our annual shell shows and concluded the following:

1. Some members would like to be able to bring exhibits to show off families that they are collecting, without having to prepare them for competition and without putting them in a competitive category
2. Other members would like to see more competitors in each category they exhibit in, so that if they win, they get more of a sense of achievement.
3. Some members would like to exhibit in similar categories to nationals and be judged in detail as a practice to fine tune their national entries, even if they are the only one competing at the annual show in that category.
4. Since at annual shows our "experts" in particular families are typically competing in that family and cannot judge, we need to find a way to improve annual show judging.

The solutions to these issues are as follows:

1. 2009 October annual show will have three types of exhibit. Competitive judged entry; Competitive with educational component for COA; non competitive shell show entry. The non-competitive entries could go in a random draw to select a winner for a prize.
2. In competition there may or may not be some standard categories (cowries, cones etc) but there will also be a number of catch all multifamily categories even as general as "gastropod under 50mm worldwide, or "any favourite single gastropod family", One locality, beach, self, etc) This way competitors can still show and test the worth of their favourite families, but compete against other families to make the win more worth while. Other types of entry were also thought to be good – photos, art & craft etc.
3. As well as the October show it was decided to have a couple of "mini shows" where exhibits are brought along, and then judged and reviewed for comment by all present. This does not necessarily mean competition against other exhibits, but allows those preparing for nationals, and annual October shows, to get critically reviewed. Other members will learn more about how to identify quality of shells in the process.
4. We decided to have some judging workshops and either at these or separately, prepare a detailed breakdown of how to judge different families that a judge may not be overly familiar with. (Different breakdowns for different families).

### Resulting program for the first few meetings next year.

Jan 24<sup>th</sup> Meeting topic – Bring along your favourite species pairs, where you have 2 specimens one very large, the other very small for the species. "Biggest and smallest" Finalise categories for March mini-show

Feb 28<sup>th</sup> Display box & lid design for ease of pack down and transport to places like Perth. Bring along your thoughts and any unusual display box designs you have. Also this will be the first workshop on judging with a view to defining a detailed breakdown of judging parameters for the categories in the mini-show.

April 28<sup>th</sup> First mini-show

**Field trip to Kurnell** - Sun 11<sup>th</sup> January. The plan for those who can make a day of it. Picnic Lunch (BYO everything) 1pm, 2pm beach walking, 2.45pm rock platform areas, later option to try other areas nearby. Note there are other good low tides, if some members want to collect at other locations from the list. Call to discuss dates.

---

## Kurnell Club Field Trip

### Steve Dean

Most of us parked near the shop at the beachfront just outside the Botany Bay National Park (at the junction of Prince Charles Pde and Polo St). By 2pm we had all arrived. Low tide is at 3.45pm (0.02m). From there we walked along the beach or on the promenade through the parkland to the captain cook monument, where most of us had lunch in the park.

The rock platform starts at this point and heads NE towards the entrance to Botany Bay. At the monument there are a number of rocks to turn but most had been silted up with mud. No interesting live species were found here. I found a nice fresh dead *Cypraea vitellus*. The next 500m of platform heading NE is flat and has no rocks to turn. Rough weather had removed most of the plant growth from this area, and there were very few small shells washed up onto the sand above the platform.





## The Sydney Sheller



At the end of this stretch of platform where it joins the rising sandstone headland that is the entrance to the bay and swings E, there is one small set of sheltered rocks, some large some small, some exposed and some under water with a good variety of life.

Most of our members spent all their time looking under these rocks.



A limited selection of cowries were found along with more than normal the varieties of Nudibranchs and other slugs and worms.



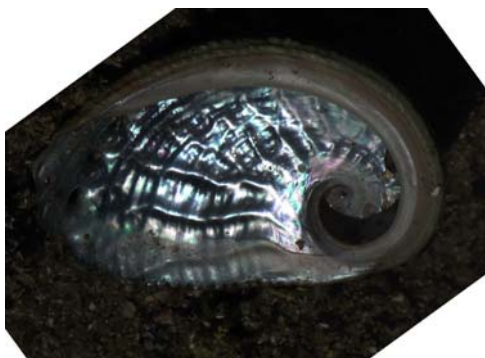




# The Sydney Sheller



*Doriopsilla carneola*



As is usually the case intertidally around Sydney, the *Turbo militaris* were not in good enough condition to keep.



Kim found a very large *Charonia lampas rubicunda* which is apparently albino on the outside. Light colour forms of *Charonia lampas* are normally only found as deep water specimens (trawled), making this a very unusual find.



After the tide had turned, and with such a limited good collecting area, most members had gone home by 4pm. My father and I continued East around to the more exposed headland, but little was observed here other than the unusual "swimming anemone" *Phlyctenactis tuberculosa* floating around in a pool amongst the only outcrop of *Caulerpa filiformis* on this exposed headland. (In the NSW rock platforms I go to this anemone is rare. The top opening has not been obvious in the few I have seen, so I did not even know it was an anemone until this week - Phil Colman identified it for me.)





After working our way back along the platform and beach to our car, we then headed West along Silver Beach, walking and driving all the way to the end where it reaches the mangroves. This beach now has breakwalls sticking out into the bay every 100m. These seem to protect the deeper parts of the weed beds, the beach and the road. However either the building of them, or the resulting wave surge has destroyed all the in shore weed beds along with most of the bivalve species previously common here – only a couple of species of heavy very dead bivalves were washing up in spite of the strong on shore winds (NE).

We were definitely the last members to leave Kurnell - at 6.30pm.

---

## Shell Club Minutes – 22nd November 2008

The President, Steve Dean, opened the meeting at 2.34pm.

**Attendance:** Steve Dean, Sandra Montague, Maureen Anderson, Peter Pienaar, Chris Barnes, Ron Moylan, Jack Hannan and Kim Bishop.

**Visitors:** Karen Barnes, Andrew Barnes and Alex Barnes.

**Apologies** were received from John Franklin, Bob Snedic, Michael Keats and Keith Dean.

**Correspondence** refer General Business.

### Finance

Bank account balance currently \$3,337.72 reported by Treasurer, Peter Pienaar.

### Sydney Sheller

The October-November 2008 issue is now available and is being mailed to members who did not receive a copy at today's meeting. Nine members have elected to receive a copy of Sydney Sheller in PDF format via email. Steve Dean was thanked by Kim Bishop for his efforts and time in producing the Sydney Sheller.

### Library

Volume 2 of the Philippine Marine Mollusks book by Guido Poppe is due out at the end of November. Steve Dean to check pricing with Hugh Morrison for a copy for our Library.

### Coming Events

No meeting scheduled for December, next meeting will be 24<sup>th</sup> January 2009.

### Field Trips, Shows and Club Visits

Ron Moylan provided an interesting report on a recent diving trip to South Bellona Reefs, Coral Sea in search of *Lyria grangei*, *Voluta thatcheri* and the ultra rare *Conus lamberti*. Despite rough conditions Ron was successful in obtaining specimens of all three shells including many other sought after species.

Chris Barnes reported that he had found *Cypraea isabella* and *Cypraea hammondae* on a recent visit to the North Coast of NSW.

**Acquisitions** Steve Dean reported on the purchase of a *Bursa latitudo latitudo*.

**General Business** Peter Pienaar reported on the Fisher's Ghost Stamp Fair held recently. Despite his best efforts in promoting The Shell Club of Sydney, little interest was shown by stamp collectors.

An email from a person from Queensland offering shell books for sale was handed around for follow up by any interested members.

Correspondence from Stephanie Clark advising of her new email address in the US was received advising that unless issues regarding her Green Card were sorted out she will be returning to Australia.

An email from Jocelyn Brook with details of a large cone collection for sale was received and passed around for follow up by any interested members.

Email correspondence between Sandra Guy and Steve Dean was tabled. Sandra is a Senior Information Officer with the Dept of Environment and Climate Change (NSW) and was seeking information about rules and regulations applying to the collecting of shells from beaches.

**The meeting closed at 3.21pm.**

### Presentation

Chris Barnes provided a talk and showed a collection titled "Unusual Shells of the Sydney Region".

A general discussion about the Annual Shell Show was followed by our Christmas Dinner in the Ryde Eastwood Leagues Club Restaurant which was attended by 10 adults and 2 children.

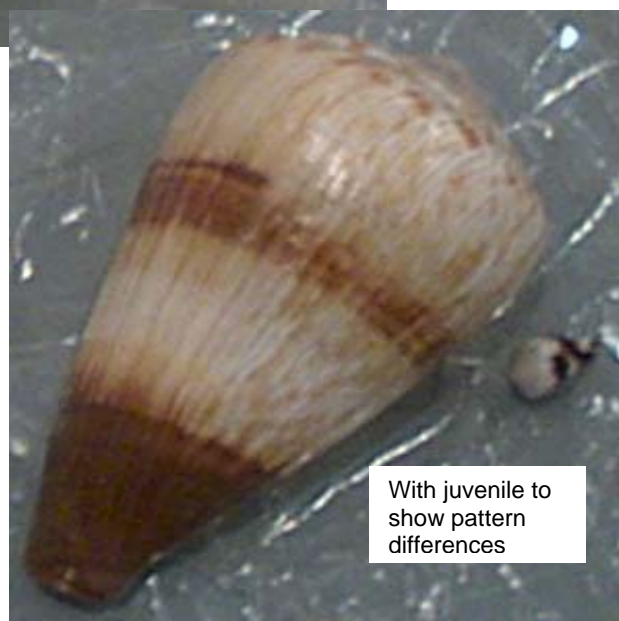
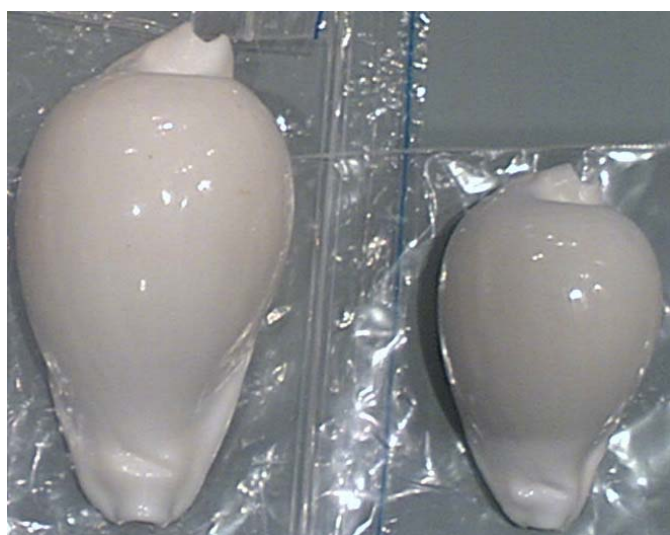
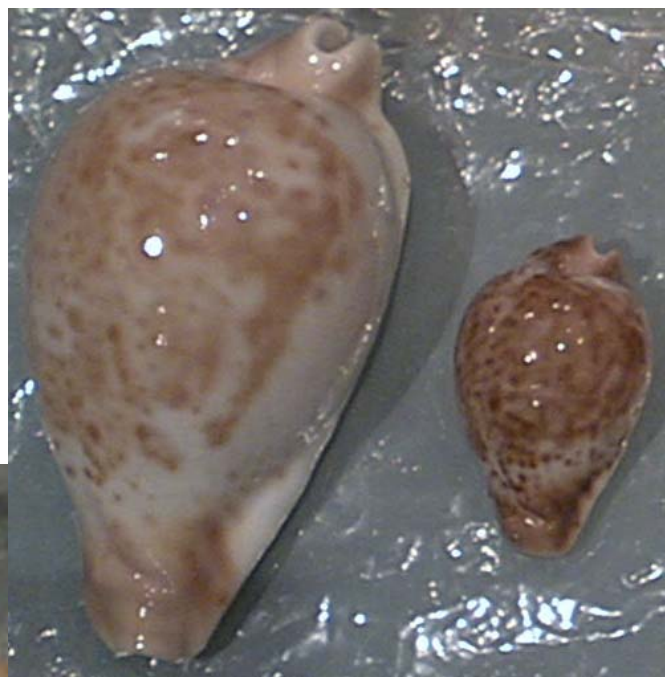
**Post Meeting Discussions:** See "News Since November" article above





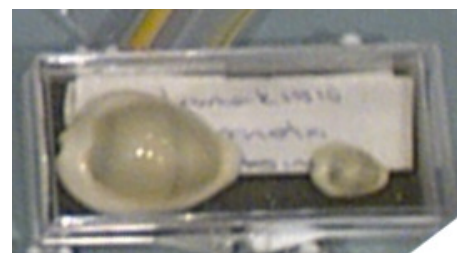
## January 09 Meeting (Pictures)

Biggest and smallest pairs of mature specimens of a species



With juvenile to  
show pattern  
differences





Other shells on display







## Banned From K-Mart...

This is why women should not take men shopping against their will.

After I retired, my wife insisted that I accompany her on her trips to K-Mart. Unfortunately, like most men, I found shopping boring and preferred to get in and get out. Equally unfortunately, my wife is like most women - she loved to browse.

Yesterday my dear wife received the following letter from the local K-Mart:

Dear Mrs. Gilbert

Over the past six months, your husband has been causing quite a commotion in our store. We cannot tolerate this behaviour and have been forced to ban both of you from the store. Our complaints against Mr. Gilbert are listed below and are documented by our video surveillance cameras.

1. June 15: Took 24 boxes of condoms and randomly put them in people's carts when they weren't looking.
2. July 2: Set all the alarm clocks in Homewares to go off at 5-minute intervals.
3. July 7: Made a trail of tomato juice on the floor leading to the women's restroom.
- 4 July 19: Walked up to an employee and told her in an official voice, 'Code 3 in Homewares. Get on it right away.'
5. August 4: Went to the Service Desk and tried to put a bag of M&M's on layaway.
6. August 14: Moved a 'CAUTION - WET FLOOR' sign to a carpeted area.
7. August 15: Set up a tent in the camping department and told other shoppers he'd invite them in if they would bring pillows and blankets from the bedding department.
8. August 23: When a clerk asked if they could help him he began crying and screamed, 'Why can't you people just leave me alone?'
9. September 4: Looked right into the security camera and used it as a mirror while he picked his nose.
10. September 10: While handling guns in the hunting department, he asked the clerk where the antidepressants were.
11. October 3: Darted around the store suspiciously while loudly humming the 'Mission Impossible' theme.
12. October 6: In the auto department, he practiced his 'Madonna look' by using different sizes of funnels.
13. October 18: Hid in a clothing rack and when people browsed through yelled, 'PICK ME! PICK ME!'
14. October 21: When an announcement came over the loud speaker, he assumed a foetal position and screamed, 'OH NO! IT'S THOSE VOICES AGAIN!'

And last, but not least.....

15. October 23: Went into a fitting room, shut the door, waited awhile, and then yelled very loudly, 'Hey! There's no toilet paper in here!'

Sincerely,  
K-Mart